

## URBAN LAST-MILE INFRASTRUCTURE BY FOURMATIV

21,000 sq. ft of Ground-Level Urban Fulfilment within 2 km of 5 multi story residential complexes.

Strategically positioned in Kolshet, Thane this **FOURUN hub** is designed to serve high-frequency urban distribution needs. Located just 10 meter's from the main road and surrounded by established multi-storey residential developments, the site offers immediate proximity to end consumers. This enables faster dispatch cycles and reduced last-mile costs in one of Mumbai's most supply-constrained urban pockets.

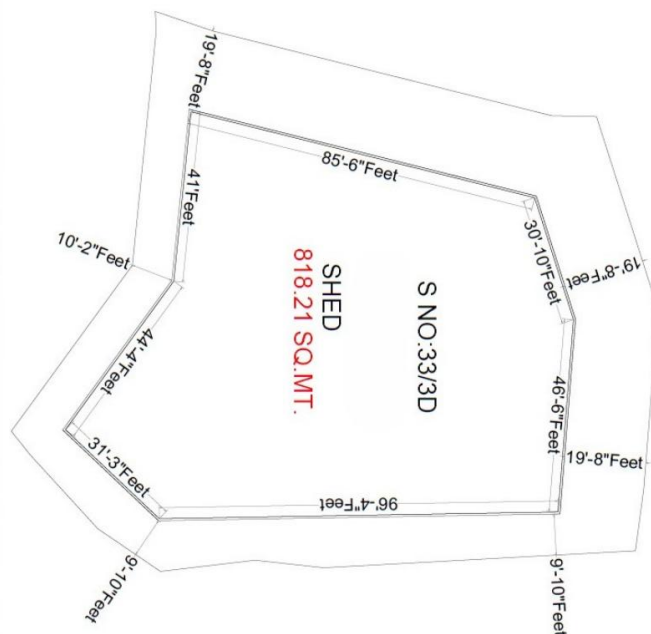
**SITE LOCATION** <https://maps.app.goo.gl/85RqaTXPh8twb7J48>

### PROXIMITY HIGHLIGHTS

Location	Lodha Crown Kolshet	Lodha Amara Thane	Dosti Heron	Dosti Pine	Kalpataru Sunrise Thane
Distance from Site	1.2 km	900 m	1.2 km	1.5 km	1.9 km



### SITE LAYOUT



## PROJECT OVERVIEW

### SITE DETAILS

- Carpet Area: 21,000 sq. ft (5k+4k+12k)
- Floor: Ground
- Shape: Rectangular
- Aspect Ratio: 02:01
- Ceiling Height: 14 ft

### PARKING & LOGISTICS

- Parking Space: 50 (No of Bikes)
- Parking Distance from Entry: 10 m
- Loading/Unloading Bays: 4
- Shutters: Available (10 ft x 10 ft)

### CIVIL CONSTRUCTION

- Flooring: Kota
- Walls: Shed Structure
- Ceiling: Shed Structure
- Insulation: Available
- ODU Space (Cold Room Machines): Available
- Seating Area: Area Available

### ACCESS & FRONTAGE

- Front Width: 150 ft
- Entry/Exit Points: 2
- Street Width: 60 ft
- Distance from Main Road: 10 m

### VALUE ADDED SERVICES

- Security Guard: Yes
- Housekeeping Staff: Yes
- Waste Management Services: Yes

### UTILITIES & COMPLIANCE

- Power Availability: 3 phase power
- Operating Hours: 24x7
- Staff Washroom (Onsite): Available
- Rider Washroom (External): Available
- DG Space: Available
- Water Supply: 24-hour
- Title Clearance: Clear
- Sanctioned Layout: Yes

## THE COMPETITIVE EDGE



### CUSTOMIZABLE & SCALABLE DEVELOPMENT

Customized fitment layouts

Modularized design framework



### STREAMLINED COMPLIANCE

100% documentation and due diligence resolution



### QUALITY ASSURANCE

Consistent development standards across locations



### TIME-TO-MARKET INFRASTRUCTURE

Standardized infrastructure readiness

Rapid deployment capability

Flexible commercial structuring

## THE FOURMATIV NETWORK

FOURUN is Fourmativ's urban last-mile platform designed as interoperable, operator-neutral infrastructure embedded within consumption clusters. Across Mumbai and the surrounding region, it operates at multiple strategic locations to ensure proximity, speed, and operational readiness for urban distribution.

**Key Locations:** WEH (Andheri), Marol, MIDC (Nerul), Sewri, Chandivali Naka, Kolshet (Thane), Near Taloja Toll, Vikhroli, Malad, Chembur, Nahur.