

URBAN LAST-MILE INFRASTRUCTURE BY FOURMATIV

14,500 sq. ft of Ground and First Floor Urban Fulfilment within 2 km of various multi story residential complexes.

Strategically positioned in Nahur, this **FOURUN hub** is designed to serve high-frequency urban distribution needs. Located just 20 feet from the main road and surrounded by established multi-storey residential developments, the site offers immediate proximity to end consumers. This enables faster dispatch cycles and reduced last-mile costs in one of Mumbai’s most supply-constrained urban pockets.

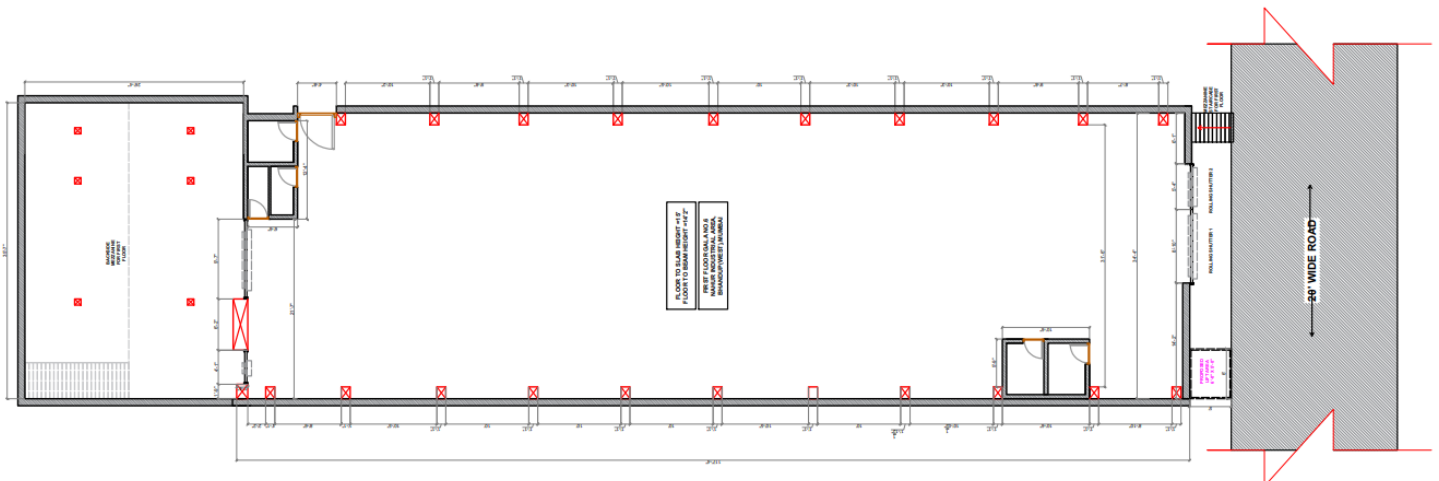
SITE LOCATION <https://maps.app.goo.gl/ugsc4132RyHrwipXA>

PROXIMITY HIGHLIGHTS

Location	Runwal Greens	Rustomjee Bella	Ashford Royale	Kalpataru Crest	Piramal Revanta
Distance from Site	750 m	1.7 km	1.2 km	1.5 km	2 km



SITE LAYOUT



PROJECT OVERVIEW

SITE DETAILS

- Carpet Area: **14,500 sq. ft**
- Floor: (Ground 10,000), (First 4,500)
- Shape: Rectangular
- Aspect Ratio: 01:1.6
- Ceiling Height: 10 ft

PARKING & LOGISTICS

- Parking Space: **600 Sq. ft.**
- Parking Distance from Entry: **20 ft**
- Loading/Unloading Bays: **3**
- Shutters: Available (10 ft x 10 ft)

CIVIL CONSTRUCTION

- Flooring: Kota
- Walls: RCC Structure
- Ceiling: RCC Structure
- Insulation: Available
- ODU Space (Cold Room Machines): Available
- Seating Area: Area Available

ACCESS & FRONTAGE

- Front Width: **80 ft**
- Entry/Exit Points: **3**
- Street Width: **12 ft**
- Distance from Main Road: **20 ft**

VALUE ADDED SERVICES

- Security Guard: Yes
- Housekeeping Staff: Yes
- Waste Management Services: Yes

UTILITIES & COMPLIANCE

- Power Availability: **3 phase power**
- Operating Hours: **24x7**
- Staff Washroom (Onsite): Available
- Rider Washroom (External): Available
- DG Space: Available
- Water Supply: **24-hour**
- Title Clearance: Clear
- Sanctioned Layout: Yes

THE COMPETITIVE EDGE



CUSTOMIZABLE & SCALABLE DEVELOPMENT

Customized
fitment layouts

Modularized
design
framework



STREAMLINED COMPLIANCE

100% documentation
and due diligence
resolution



QUALITY ASSURANCE

Consistent development
standards across
locations



TIME-TO-MARKET INFRASTRUCTURE

Standardized
infrastructure
readiness

Rapid
deployment
capability

Flexible
commercial
structuring

THE FOURMATIV NETWORK

FOURUN is Fourmativ's urban last-mile platform designed as interoperable, operator-neutral infrastructure embedded within consumption clusters. Across Mumbai and the surrounding region, it operates at multiple strategic locations to ensure proximity, speed, and operational readiness for urban distribution.

Key Locations: WEH (Andheri), Marol, MIDC (Nerul), Sewri, Chandivali Naka, Kolshet (Thane), Near Taloja Toll, Malad, Nahur.