

URBAN LAST-MILE INFRASTRUCTURE BY FOURMATIV

10,000 sq. ft of Ground-Level Urban Fulfilment within 1.8 km of 5 major residential complexes.

Strategically positioned on Western Express Highway, Andheri East, this FOURUN hub is designed to serve high-frequency urban distribution needs. Located just 100 ft. from the main road and surrounded by established multi-storey residential developments, the site offers immediate proximity to end consumers. This enables faster dispatch cycles and reduced last-mile costs in one of Mumbai’s most supply-constrained urban pockets.

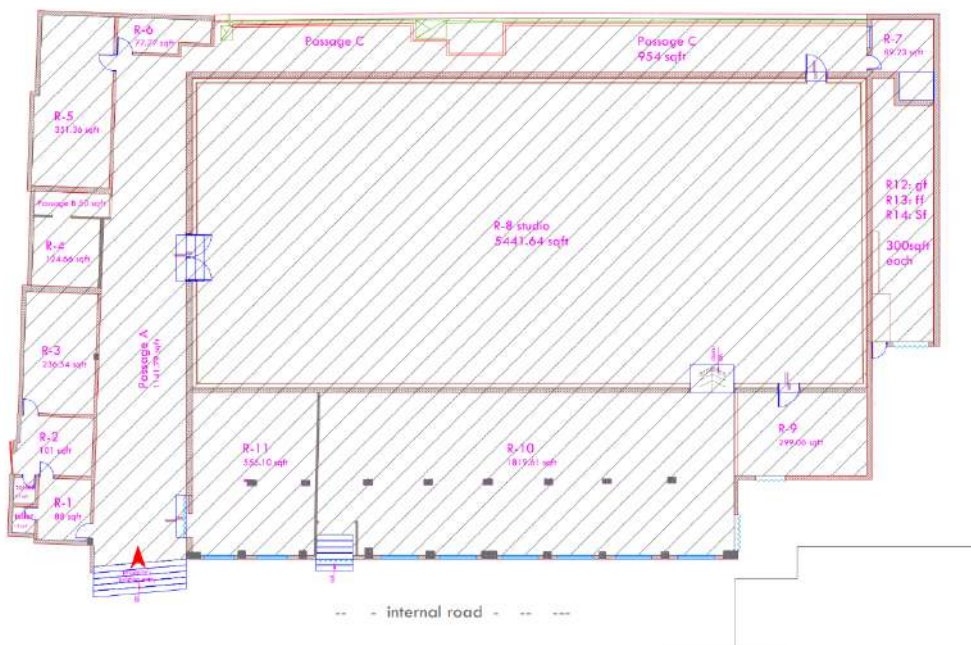
SITE LOCATION <https://maps.app.goo.gl/uFXDwhMEhq9TMHZk8>

PROXIMITY HIGHLIGHTS

Location	Greenwoods CHSL	Mahindra Vivante	Lodha Acenza	VKG Krishna Residences	Sher E Punjab Colony Andheri East,
Distance from Site	270 m	850 m	1.3 km	1.0 km	1.8



SITE LAYOUT



PROJECT OVERVIEW

SITE DETAILS

- Carpet Area: 10,000 sq. ft
- Floor: Ground
- Shape: Rectangular
- Aspect Ratio: 01:02
- Ceiling Height: 26 ft.

PARKING & LOGISTICS

- Parking Space: 800 Sq. ft.
- Parking Distance from Entry: 100 ft
- Loading/Unloading Bays: 4
- Shutters: First shutter 4 Shutters (8ft x 9ft)

CIVIL CONSTRUCTION

- Flooring: PCC
- Walls: Shed Structure
- Ceiling: Shed Structure
- Insulation: Available
- ODU Space (Cold Room Machines): Available
- Seating Area: Available

ACCESS & FRONTAGE

- Front Width: 70 ft
- Entry/Exit Points: 1
- Street Width: 18 ft
- Distance from Main Road: 100 ft.

VALUE ADDED SERVICES

- Security Guard: Yes
- Housekeeping Staff: Yes
- Waste Management Services: Yes

UTILITIES & COMPLIANCE

- Power Availability: 3 phase power
- Operating Hours: 24 hrs
- Staff Washroom (Onsite): Available
- Rider Washroom (External): Available
- DG Space: Available
- Water Supply: 24-hour
- Title Clearance: Clear
- Sanctioned Layout: Yes

THE COMPETITIVE EDGE



CUSTOMIZABLE &
SCALABLE DEVELOPMENT

Customized
fitment layouts

Modularized
design
framework



STREAMLINED COMPLIANCE

100% documentation
and due diligence
resolution



QUALITY ASSURANCE

Consistent development
standards across
locations



TIME-TO-MARKET
INFRASTRUCTURE

Standardized
infrastructure
readiness

Rapid
deployment
capability

Flexible
commercial
structuring

THE FOURMATIV NETWORK

FOURUN is Fourmativ's urban last-mile platform designed as interoperable, operator-neutral infrastructure embedded within consumption clusters. Across Mumbai and the surrounding region, it operates at multiple strategic locations to ensure proximity, speed, and operational readiness for urban distribution.

Key Locations: WEH (Andheri), Kavesar (Thane), Marol, MIDC (Nerul), Sewri, Chandivali Naka, Kolshet (Thane), Near Taloja Toll, Near SEEPZ (Andheri E), Bhandup, Fort, Vikhroli, Malad, Thane, Chembur.