

URBAN LAST-MILE INFRASTRUCTURE BY FOURMATIV

9,800 sq. ft of Ground-Level Urban Fulfilment within 1 km of 4 multi story residential complexes & 1 Commercial Building.

Strategically positioned in Marol, Andheri East, this FOURUN hub is designed to serve high-frequency urban distribution needs. Located just 250 m from the main road and surrounded by established multi-storey residential developments, the site offers immediate proximity to end consumers. This enables faster dispatch cycles and reduced last-mile costs in one of Mumbai’s most supply-constrained urban pockets.

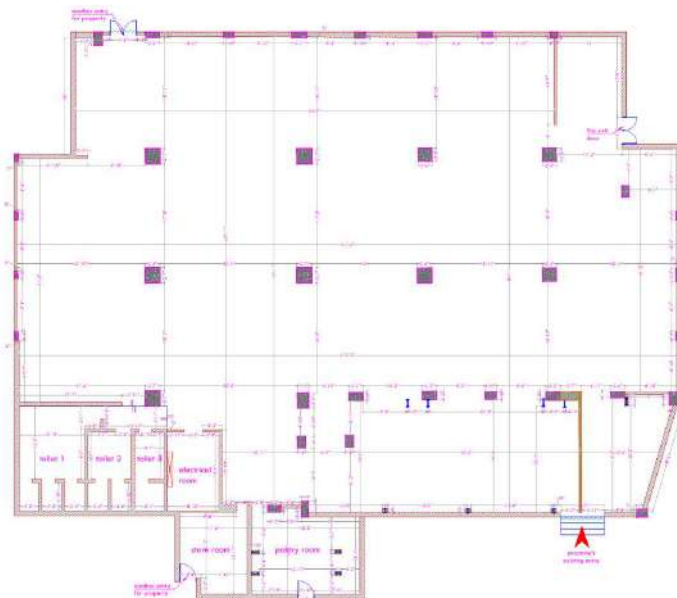
SITE LOCATION <https://maps.app.goo.gl/AC2eq7bvwmJts9tu9>

PROXIMITY HIGHLIGHTS

Location	Vasant Oasis	Blue Fortuna CHS	Kanakia Sevens	Crescent Exotica	Times Square Building
Distance from Site	600 m	850 m	500m	850m	1 km



SITE LAYOUT



PROJECT OVERVIEW

SITE DETAILS

- Carpet Area: 9,800 sq. ft
- Floor: Ground
- Shape: Square
- Aspect Ratio: 01:01.3
- Ceiling Height: 11' 6" BOB

PARKING & LOGISTICS

- Parking Space: 40-50 Bikes (rear side)
- Parking Distance from Entry: 50 ft
- Loading/Unloading Bays: 2
- Shutters: First shutter 4.8 ft, Rear shutter is 7'8" ft

CIVIL CONSTRUCTION

- Flooring: Vitrified
- Walls: Brickwork
- Ceiling: RCC structure
- Insulation: RCC structure
- ODU Space (Cold Room Machines): Available
- Seating Area: seating area can be made inside

ACCESS & FRONTAGE

- Front Width: 81.7 ft
- Entry/Exit Points: 2
- Street Width: 10 ft
- Distance from Main Road: 250 m

VALUE ADDED SERVICES

- Security Guard: Yes
- Housekeeping Staff: Yes
- Waste Management Services: Yes

UTILITIES & COMPLIANCE

- Power Availability: 3 phase power
- Operating Hours: 24 hrs
- Staff Washroom (Onsite): 3 washrooms inside
- Rider Washroom (External): Available
- DG Space: Available
- Water Supply: 24-hour
- Title Clearance: Clear
- Sanctioned Layout: Yes

THE COMPETITIVE EDGE



CUSTOMIZABLE &
SCALABLE DEVELOPMENT

Customized
fitment layouts

Modularized
design
framework



STREAMLINED COMPLIANCE
100% documentation
and due diligence
resolution



QUALITY ASSURANCE
Consistent development
standards across
locations



TIME-TO-MARKET
INFRASTRUCTURE

Standardized
infrastructure
readiness

Rapid
deployment
capability

Flexible
commercial
structuring

THE FOURMATIV NETWORK

FOURUN is Fourmativ's urban last-mile platform designed as interoperable, operator-neutral infrastructure embedded within consumption clusters. Across Mumbai and the surrounding region, it operates at multiple strategic locations to ensure proximity, speed, and operational readiness for urban distribution.

Key Locations: WEH (Andheri), Kavesar (Thane), Marol, MIDC (Nerul), Sewri, Chandivali Naka, Kolshet (Thane), Near Taloja Toll, Near SEEPZ (Andheri E), Bhandup, Fort, Vikhroli, Malad, Thane, Chembur.