



FOURUN

SEWRI - NAVBHARAT ESTATES

URBAN LAST-MILE INFRASTRUCTURE BY FOURMATIV

14,000 sq ft of Ground-Level Urban Fulfilment Within 900 m of Dense Residential Catchments.

Strategically positioned in Sewri, Navbharat Estates, this **FOURUN hub** is designed to serve high-frequency urban distribution needs. Located just 100 m from the main road and surrounded by established multi-storey residential developments, the site offers immediate proximity to end consumers. This enables faster dispatch cycles and reduced last-mile costs in one of Mumbai's most supply-constrained urban pockets.

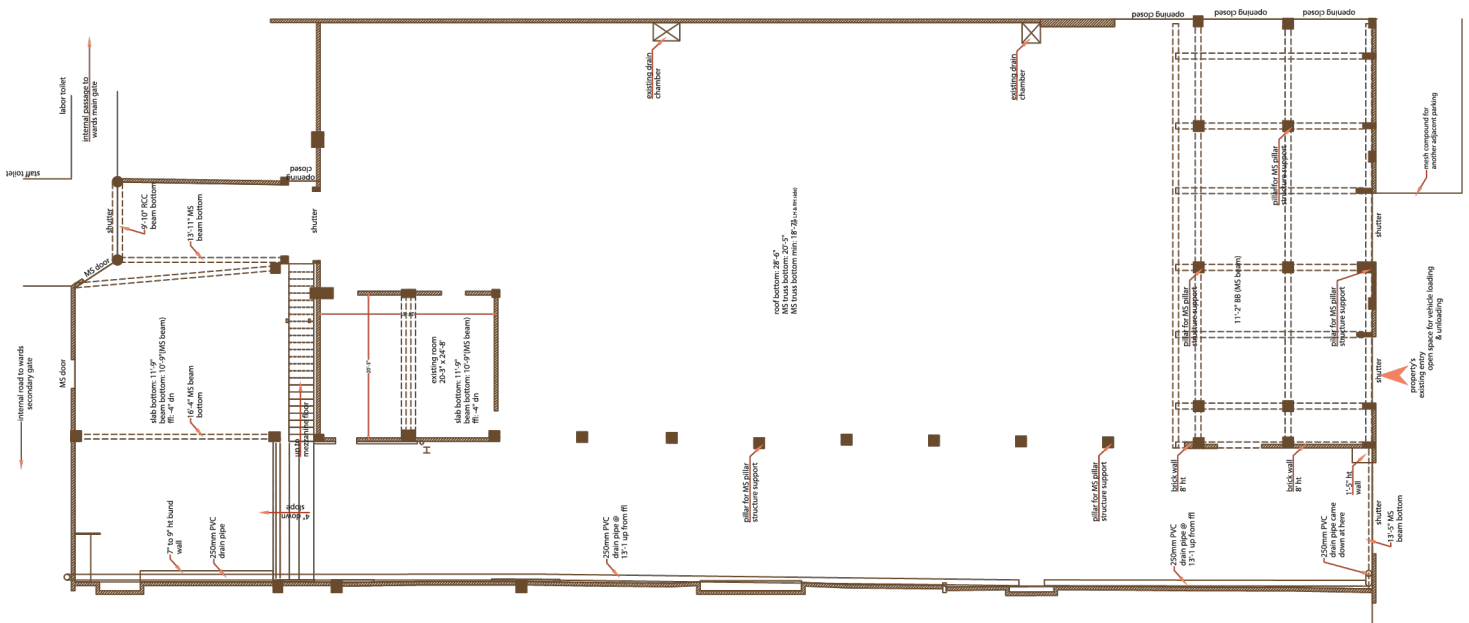
SITE LOCATION

PROXIMITY HIGHLIGHTS

Location	Mahavir Co-Op Housing	Krypton (Nearby Housing)	Celestia Spaces (Nearby Housing)	Veena Beena CHS	Ashok Gardens (Nearby Housing)
Distance from Site	140 m	600 m	800 m	900 m	900 m



SITE LAYOUT



PROJECT OVERVIEW

SITE DETAILS

- Carpet Area: **14,000 sq ft**
- Floor: Ground
- Shape: Rectangular
- Aspect Ratio: **1:03**
- Ceiling Height: **18'-7" max / 11'-2" min**

PARKING & LOGISTICS

- Parking Space: **30 Bikes (rear side)**
- Parking Distance from Entry: **10 m**
- Loading/Unloading Bays: **4**
- Shuttles: **4shuttles, approx. 9 ft 9 in each**

CIVIL CONSTRUCTION

- Flooring: Kota flooring
- Walls: Brickwork
- Ceiling: Shed Structure
- Insulation: Provided
- ODU Space (Cold Room Machines): Available
- Seating Area: Available, on rear side

ACCESS & FRONTAGE

- Front Width: **79 ft**
- Entry/Exit Points: **4**
- Street Width: **10 ft**
- Distance from Main Road: **100 m**

VALUE ADDED SERVICES

- Security Guard: Yes
- Housekeeping Staff: Yes
- Waste Management Services: Yes

UTILITIES & COMPLIANCE

- Power Availability: **23 KW**
- Operating Hours: **24 hrs**
- Staff Washroom (Onsite): **1**
- Rider Washroom (External): **2**
- DG Space: Available
- Water Supply: **24-hour** (washroom only)
- Fire NOC: Secured
- Title Clearance: Clear
- Sanctioned Layout: Yes

THE COMPETITIVE EDGE



CUSTOMIZABLE & SCALABLE DEVELOPMENT

Customized
fitment layouts

Modularized
design framework



STREAMLINED COMPLIANCE

100% documentation and
due diligence resolution



QUALITY ASSURANCE

Consistent development
standards across locations



TIME-TO-MARKET INFRASTRUCTURE

Standardized
infrastructure
readiness

Rapid
deployment
capability

Flexible
commercial
structuring

THE FOURMATIV NETWORK

FOURUN is Fourmativ's urban last-mile platform designed as interoperable, operator-neutral infrastructure embedded within consumption clusters. Across Mumbai and the surrounding region, it operates at multiple strategic locations to ensure proximity, speed, and operational readiness for urban distribution.

Key Locations: WEH (Andheri) • Kavesar (Thane) • Marol • MIDC (Nerul) • Sewri • Nahur • Chembur • Taloja (MIDC) Near Phoenix Market City (Kurla) • Chandivali Naka • Kolshet (Thane) • Near Taloja Toll • Charkop (Kandivali W) Near SEEPZ (Andheri E)